



WWW.facebook.com/TawaMenzShed

WWW.tawamenzshed.org.nz

February 2018

# Newsletter - February 2018

Tawa MenzShed • Feb 17, 2018

## Welcome to the first Newsletter from MenzShed Tawa for 2018.

**So, who are we and the purpose of the Society? It is to:**

Provide an environment for men and women in the Tawa and surrounding area to pursue their personal growth and develop a greater understanding of their role in their community and their family. In particular the Society aims to be beneficial to the community by:-

1:Providing premises in Tawa for men to have access to workshop facilities that enable them to share their knowledge, experience and skills and work in harmony on projects for the benefit of the community or for their own personal benefit.

2:Promoting the benefits of mens personal growth as affecting the community and family.

3:Facilitating the understanding of mens issues by the community.

4:Providing educational activities and other programs and projects consistent with the aims of the Society.

5:Liaising with other organisations to further the aims of the Society and its benefits to the community.

6:Providing other support and assistance as may be consistent with the charitable purpose of the Society



## Our Shed

As reported earlier, the premises is a shell and work needs to be carried out to make it suitable for our needs. In order to get the shed a little more habitable and 'fit for purpose', **Howard Woolston** from **Smartway Builders** one of our committee members, has kindly designed the fit-out of the shell of the shed and committed to having it up and running within the next few months. This fit out includes building floors and walls and getting the interior ready for the lighting, and electrical sub-contractors. etc. This will all be carried out with health and safety rules and regulations as paramount. **Please note that whilst the shed is being fitted out, the area is considered a construction site with restricted access. So for the next few months, access is limited to Smartway Builders personnel.**

Once the fit-out nears completion, members and volunteers will be invited to assist in finishing the fit-out (building work benches, setting up the library and storage of tools etc).

On the subject of tools, the shed has been given a large number of new and pre-loved tools by generous donors. But we can always use more. If you have any tools surplus to requirements or someone who wants to donate them to a good cause, please contact Jack Fry (below)

**Jack Fry** who is responsible for the tools for the shed reports:

*"We are very lucky that many people have donated tools and equipment to our Tawa MenZshed. We have over 150 items in various locations around the district. At the present moment I have decided not to gather them all together until the shed is ready for them. Some of the items are in a brand new condition and others slightly rusty or blunt. Another job in the future could be a sharpening workshop? In the mean time I am proposing a register of all that we have. The register contains details from the manufacturer so that we have the information if we need advice from them. It covers the safety of the item where qualified people can certify that the tool is safe to use and an idea of the degree of the hazards when using the tool. The proposed register lists attachments and accessories so that we know what is missing or needed to operate and an indication that the item has been engraved for identification as recommended by the police in case the item is stolen. To set up the register we need help from:*

- ◆ A member who could produce better than my ones.
- ◆ A member who could improve on the design of the register and to help record all the details.
- ◆ A qualified electrician who can examine and certify the safety of the tools.
- ◆ Somebody with experience to check on the mechanical safety aspects of the tools - and finally
- ◆ Someone with an engraving tool to mark all of the items.

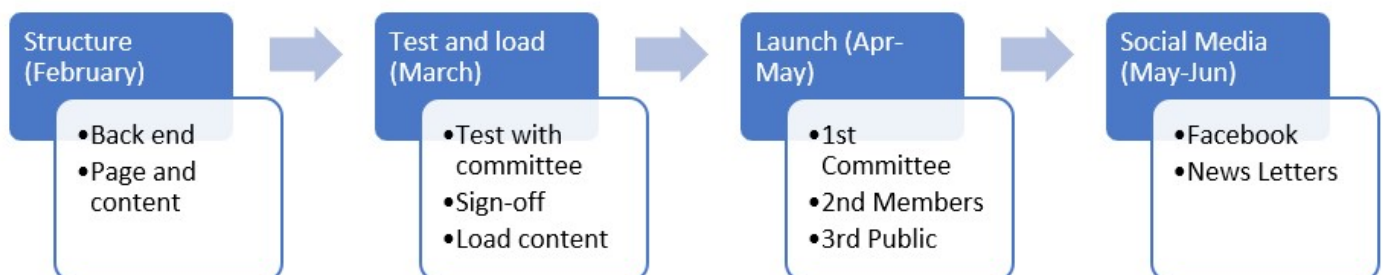
Even though MenZshed Tawa is in its infancy, we currently have over 40 paid up members and 60 on our mailing list. Please encourage your friends and neighbours to join our organisation to complete their own projects, build new ones and share their skills and talents with the Tawa community .

---

## Our Website

To Further communicate with our members and the wider community, Marius du Toit - a committee member is responsible for social media communications. The high level development timeline:

### Website development plan - 2018



## Some of the key features we are planning to incorporate include:

Membership application process  
Projects information  
Latest News  
Fund raising and sponsorship area  
A member section where you will be able to update your information  
Book for events  
See and pick up projects to participate in

There is much more planned for the website and we will update you every month as we make progress.

---

## Activities to date

Since October 2016, MZT has made significant group progress, led primarily by chairman **Gary Beecroft** with able assistance and support from the Northern Ward Councillors, **Malcolm Sparrow** and **Jill Day** . They include;

- 1 Creating an Incorporated Society with more than 40 Members
  - 2 Electing a Committee of 12
  - 3 Registering as a Charity
  - 4 Defining site requirements
  - 5 Examining over 20 sites
  - 6 Examining many "potential" buildings
  - 7 Investigating potential partner organisations
  - 8 Commencing a marketing campaign and public meeting to gain members
  - 9 Gaining community support through local charity and community groups (Rotary, Lions, Church Ministers Association) and seeking start-up funding
- 

### **Santa Parade Float**

In addition, MenZshed Tawa was the base for construction of four of Christmas floats and the ITM Santa's workshop. The project led by **John Bertie** and included **Murray Riley** , **John Kyne** , and **Wrae Duncan** .



---

### **Pest-Free Traps**

**Dr Ross Denton** and **Paul Langham** are championing Pest-Free Tawa as part of Wellington's Predator-Free program. To this end MenZshed Tawa has built over one hundred traps for this worthwhile cause. The photograph below shows (from the left) **Jack Fry** , **Wrae Duncan** and **Paul Langham** . (Absent is **David Bray** ) in the trap factory. It is hoped that Wellington will be the first predator-free capital in the world .



---

## Tools Time

Extremely accurate information you may or may not have seen or experienced.....

**SKILSAW:** A portable cutting tool used to make boards too short.

**BELT SANDER:** An electric sanding tool commonly used to convert minor touch-up jobs into major refinishing jobs.

**WIRE WHEEL:** Cleans paint off bolts and then throws them somewhere under the workbench with the speed of light. Also removes fingerprints and hard-earned calluses from fingers in about the time it takes you to say, 'Oh shit'. Will easily wind a tee shirt off your back.

**DRILL PRESS:** A tall upright machine useful for suddenly snatching flat metal bar stock out of your hands so that it smacks you in the chest and flings your beer across the room, denting the freshly-painted project which you had carefully set in the corner where nothing could get to it.

**CHANNEL LOCKS:** Used to round off bolt heads. Commonly employed in the creation of blood-blisters.

**HACK SAW:** One of a family of cutting tools built on the Ouija board principle. It transforms human energy into a crooked, unpredictable motion, and the more you attempt to influence its course, the more dismal your future becomes.